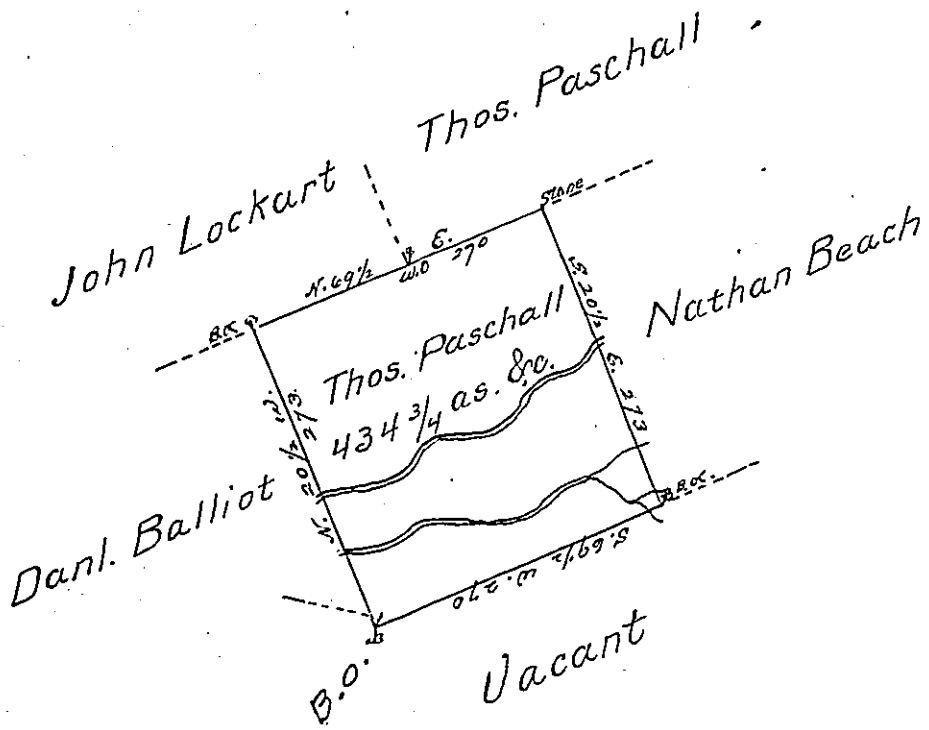


(Also A-83-91)

W



Draft of a tract of land called
 Situate on a Branch of Lower Mappalopen Creek
 in the County of Luzerne, containing four Hundred
 thirty four acres 3/4 & all was Surveyed for Thos Paschall
 the 21st day of August in pursuance of a warrant da-
 ted the 2d. day of August 1793.

by Wm. Gray D.S.

Daniel Brodhead Esqr. }
 Survey Genl. }

IN TESTIMONY that the above is a copy of the original remaining on file in
 the Department of Internal Affairs of Pennsylvania, made
 conformably to an Act of Assembly approved the 16th day of
 February, 1833, I have hereunto set my Hand and caused
 the Seal of said Department to be affixed at Harrisburg,
 this third day of December 1901

James W. Latta
 Secretary of Internal Affairs.